



## Horwood Close

Aylesbury, HP22 5GZ

**Asking Price £700,000**

LOOKING FOR MODERN, ELEGANT & SPACIOUS? The modern and stylish interiors and immaculate landscaped gardens, expertly blend classic with contemporary. Built in 2018 by Kier Developments, this isn't a new-build box, this is an established and exciting family home. Situated in a quiet cul de sac in the leafy village of Aston Clinton this home is suitable for both growing or grown families and offers luxurious modern lifestyle living at its finest.

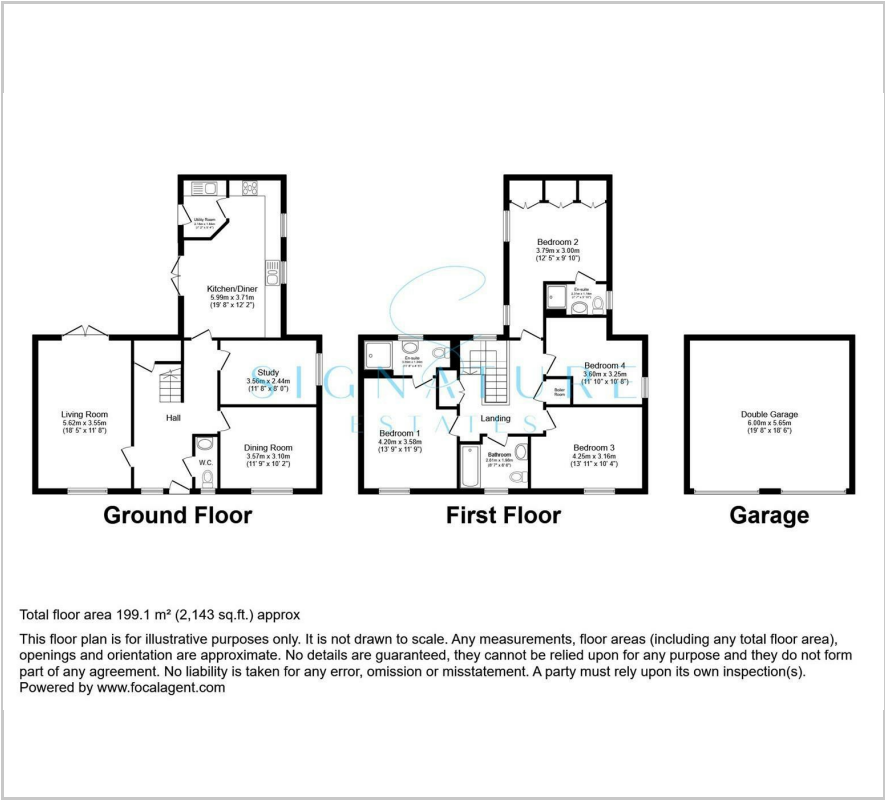
- Stylish Detached Family Home
- Four Double Bedrooms
- Two En-Suite Bathrooms
- Contemporary Kitchen Breakfast Room
- Two Spacious Reception Rooms
- Family Bathroom
- Cul De Sac Location
- Double Garage & Off Street Parking

### Viewing

Please contact our Bovingdon Office on 01923262666 if you wish to arrange a viewing appointment for this property or require further information.



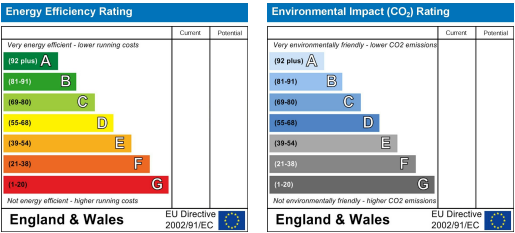
Floor Plan



Area Map



Energy Efficiency Graph



These particulars, whilst believed to be accurate are set out as a general outline only for guidance and do not constitute any part of an offer or contract. Intending purchasers should not rely on them as statements of representation of fact, but must satisfy themselves by inspection or otherwise as to their accuracy. No person in this firms employment has the authority to make or give any representation or warranty in respect of the property.